

Asphalt Batch Mix Plant

For The Roads To Be Remembered Forever

INTRODUCTION

FABHIND was successfully established in the year 1991 and started the manufacturing of Road Construction Machinery in 2010. Our well equipped plant has its head office in Vatva, GIDC, Ahmedabad, Gujarat. Since then, we are successfully supplying Waste recycling projects and road construction machineries for performing numerous mixing jobs. Enclosing with the growth agenda, we have broadened the gate of supplying quality products to our customers and laying the foundation stone of trust. **FABHIND** is integrated with multifunctional workforce having the experience in different type of field and vast knowledge of machineries. This helps our company to empower our growth and pursue massive chance in the global market. We bring the latest technology which is assisted by our supportive clients to manufacture excellent quality of products. Our organization works in collaboration with safety norms in order to offer a protective environment for our workers and thus, to meet everyday challenges related with work and specifications of our clients. **FABHIND** is an ISO 9001:2015 certified company involved in the manufacturing, supplying and installation of Asphalt Batch Mix Plant, Heavy road construction machineries & equipments and Waste tyre pyrolysis plant. We have been an established company with three manufacturing units and have an excellent track record of customer satisfaction through our perseverance work and efforts in maintaining the quality of product. We believe in keeping our customers happy by providing them the product they demand at a very competitive price. We never compromise in the quality of the product and provide best services as we believe that your progress is after all our success.



MISSION

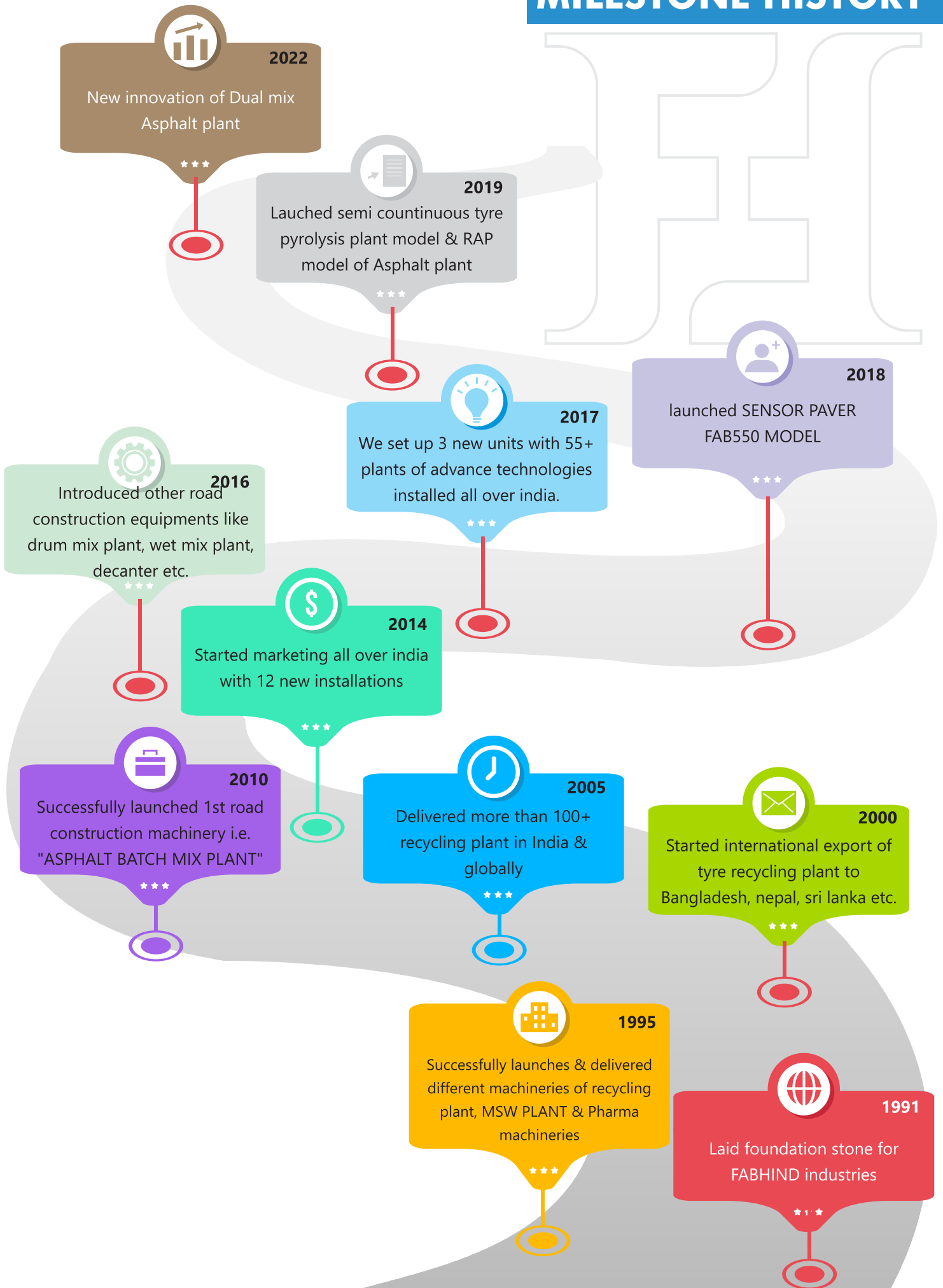
To establish best turnkey based projects for providing Fab Privilege to our clients nationally and globally.

VISION

To become a renowned build technology in the world of fabrication through our best perseverance efforts & advancement for the development and progress of our clients.



MILESTONE HISTORY



ASPHALT PLANT & ITS PARTS

COLD AGGREGATE FEEDER

- Cold aggregate feeder are provided to control homogeneous & continuous aggregate feed in required proportions.
- Maximum feeding capacity
- Feeders are usually synchronized as per production demands on site.
- Cold aggregates hopper with a heaped capacity of approximate 56 T.
- Wide opening bin width to accommodate different loader capacities.
- Anti Bridging bin design to ensure smooth and easy material flow, irrespective of the material level. Sturdy and proven.



Optional

- More than four bin
- Optic warning system
- Enclosed Design
- Emergency stop system
- Moisture sensor allows automatic burner flame control

DRYING DRUM



- Strapping and compact structure, extremely reliable.
- Efficient fuel or modular burner.
- Drive through chain sprocket direct drive by or hollow shaft gear
- Well operated with ease and simplicity.
- Alloy materials are used to defend against deterioration and tear.
- Particularly arranged flights to give unvarying movement of heat to various size aggregates.

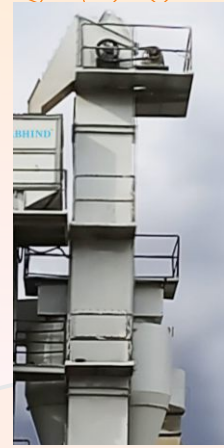


AGGREGATE HOT ELEVATOR

- The vertical Aggregate elevator is designed according to asphalt plant capacity
- Totally enclosed, vertically mounted, centrifugal discharge type bucket elevator.
- Back stop lock to secure drive mechanism
- Direct channel is provided

Optional

- Insulation with rock wool
- By-pass channel to direct hot aggregate silo
- Arrangement for gear box replacement



VIBRATING SCREEN

- Extremely reliable quality
- Well operated and negligible maintenance
- Wide region for the hot aggregate to flow
- Drives through vibrating motor with eccentric weight for vibration adjustment
- Perfectly designed internal parts that impedes mixing of assorted sizes of materials
- Well adjustable sieves, reclaimable doors platforms
- Rendered with optimum tension and tendency that aids in consistent dispersion of load.

Optional

- Wear resistance steel for longer durability & consequent higher productivity

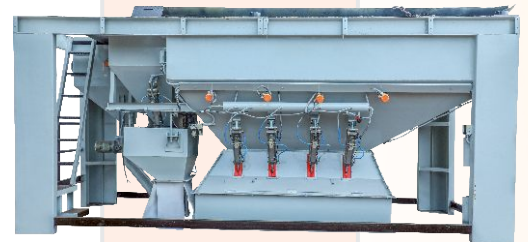


HOT MATERIAL BIN & WEIGHING UNIT

- Each compartment is equipped with mechanical overflow chute and sampling pods.
- Mineral temperature sensors are located inside the sand compartment.
- Oversize material will flow out via overflow chute to a collection point.
- Each compartment is equipped with a pneumatically actuated two-stage discharge gates controlled by the computer system.
- Each compartment has a maximum level indicator that is wired remotely to the control room to warn operator when bins are full.

Weighing System

- Automatic accumulating, weighing type Aggregate weigh hopper, with four point suspension hopper and load cell transducer.
- Automatic individual weighing type Asphalt and Filler weigh hopper with four points' suspension hopper and load cell transducer.
- All weighing hoppers are fitted with proper shock isolation device.



MIXER

- Liner & tips are made from wear resistance NI-IV - material
- Pneumatically operated gate
- Concurrent running parallel double shafts ensure homogenous mixing of asphalt with materials.
- Soft start / inverter drive system
- Special bearing ensures low maintenance.
- Requires short mixing time
- Highly efficient and reliable
- Low maintenance



BITUMEN TANK (DIRECT HEATING)

It is meant for bitumen storage purpose, which is fully jacketed by higher density glass wool to avoid heat loss, the storage capacity comprises from 15mt. to 50mt. It is equipped with bitumen level gauge, temperature sensor, valves & jacketed pipe line. Stored bitumen is heated up by means of HSD fuel fire burner which is mounted on coil.

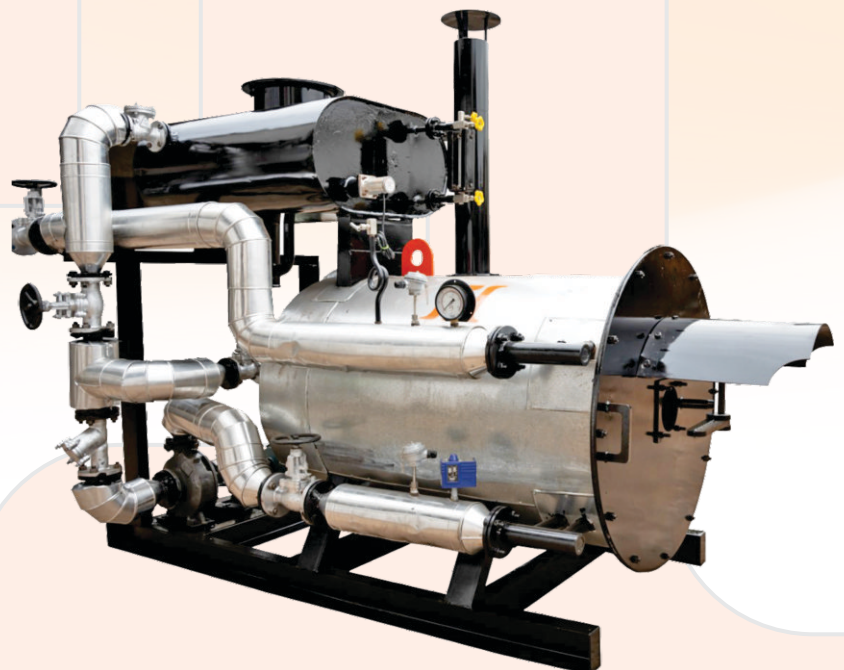
BITUMEN TANK (INDIRECT HEATING)



Structurally both Indirect & Direct bitumen tanks are same but the main difference between them is that in INDIRECT HEATING BITUMEN TANK the stored bitumen is heated up through hot oil coil which is placed inside tank shell. The hot oil is allowed to pass into coil & consequent heating of stored bitumen as per required temperature. It is also equipped with level gauge, temperature sensor, valves & jacketed pipe line.

THERMIC OIL HEATER

A thermic fluid heater is industrial heating equipment used where only heat transfer is required instead of pressure. In this equipment, a thermic fluid is circulated in the entire system for heat transfer to achieve desired temperature. The main purpose of this thermic oil heater is to heat the bitumen stored in Indirect heating tank & also to circulate hot oil into different bitumen jacketed pipelines.



POLLUTION CONTROL UNIT

- This unit helps asphalt plant to become environment friendly
- Filtering system separate dust & gas which is generated during asphalt production.

Primary Dust Collecting Unit

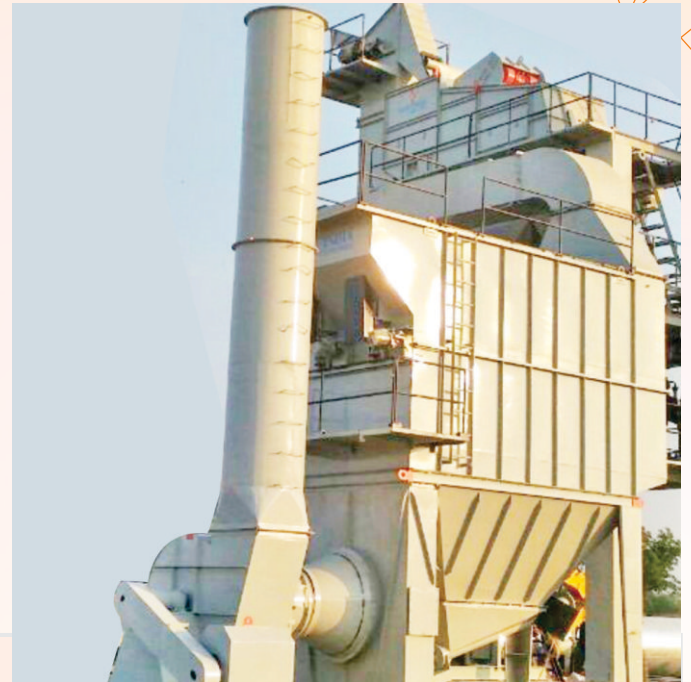
Primary dust collection system is in form of a Double Cyclone, provided to entrap larger dust particle from the dryer drum exhauster and scavenging for the batching tower. Reclaimed dust recycling conveying system comprising of a material seal damper at the bottom of the cyclones, feeding the reclaimed dust at foot of hot elevator.

Bag House Filter Unit

- The FAB series plants are provisioned with standardized multiple stage pollution control units, consisting of duplicate cyclonic extractors and an alternate bag house filter with 504 bags.
- All FAB series plant are provisioned with air flow kind bag house filter units. Our house filters are applauded in the industry for their bonded savings on power, lower upkeep, problem free service and strict conformity to rigorous environmental norms.

Highlights

- Discharge less than 50 mg / M³
- Reduced dust loads on bag house filters due to trenchant separation of coarse dust particles at firsthand stage.
- Extended Filter bag life by attenuate dust loads
- Filler recycling
- Power savings



Optional

- Dense insulation

Features

- Low maintenance
- High temperature resistant Fitter bags
- Long filter life
- Improvised thermal insulation
- Optimized flow

AUTOMATION SYSTEM

- Long, Fully Air Conditioned operator's control cabin complete with weather proof exterior and fitted with tinted toughened glass windows and flush entrance door with lock. Interconnecting wiring (related to all the above sections).
- Electrical Power control console
- Complete Motor control console for direct online starting and for star delta starting on necessary devices.



BURNER

Model	Type	Fuel	Capacity
AI 60	Modulating	HDS, LDO & FO	350 TO 900 LPH



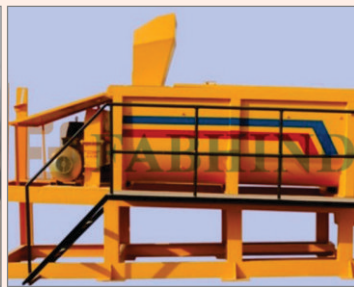
Drum Mix Plant



TECHNICAL SPECIFICATION

Plant Model	FAB-45 (45-60TPH)	FAB - 50 (60-90 TPH)	FAB-60 (90-120 TPH)	FAB-65 (90-120TPH)
Four Bin Feeder				
No. of Bins	4	4	4	4
Storage Capacity	32000	44000	50000	50000
Hopper Size (LxW)	2900mmx2200mm	3000mm x 2200mm	3000mm x 2200mm	3000mm x 2200mm
Auxillary Drive Motor	"1.5HP x 4 Nos	"2HP x 4 Nos	"2HP x 4 Nos	"2HP x 4 Nos
Auxillary Conveyor Belt	400mm x 2.4 Mtr"	500mm x 2.45 Mtr"	500mm x 2.45 Mtr"	500mm x 2.45 Mtr"
Gathering Drive Motor	5HP	5HP	7.5HP	7.5HP
Gathering Conveyor Belt	500mm x 22.5 mtr	600mm x 25.6 mtr	600mm x 29.6 mtr	600mm x 29.6 mtr
Bin Vibrator (1 No)	0.75 KW	0.75 KW	0.75 KW	0.75 KW
Feeding Capacity	100 TPH	1 SOTPH	200TPH	200TPH
Overall Dimension (Approx)	1.00 mtrx1.9mtrx2.9 mtr	11.5 mtrx2.25mtrx3.75 mtr	11.5 mtrx2.25mtrx3.75 mtr	11.5 mtrx2.25mtrx3.75 mtr
Total Connected Load	8.85 KW	10.45 KW	15.05 KW	1 Hi.05 KW
OVER SIZE REMOVAL SCREEN				
Drive Motor	0.75 KW	0.75 KW	0.75 KW	0.75 ftW
Wire Mesh	4Smm x 4Smm	45mm x 45mm	45mm x 45mm	45mm x 45mm
Screening Area	800 x 1200 mm	800 x 1200 mm	900 x J200 mm	900 x 1200 mm
SILNGER CONVEYOR				
Conveyor Drive Motor	2.20 KW	3.70 KW	3.70 KW	3.70 KW
Conveyor Belt	500mm x 15 mtr	600mm x 15 mtr	600mm x 15 mtr	600mm x 15 mtr
THERMO DRUM UNIT				
Drive Motor	J J.00 KW	18.50 KW	30.00 KW	47i.00 KW
Burner Connected Power	4.45 KW	6.25 KW	13.2 KW	13.2 KW
Exhauster	J J500 CFM	14500 CFM	18000 CFM	21000 CFM
Diameter	1230 mm	1540 mm	1850 mm	1850 mm
Length	6000 mm	6700 mm	7310 mm	8000 mm
Burner Rating	350 LPH	550 LPH	750 LPH	1100 LPH
Exhaust Drive Motor	11.00 KW	18.50 KW	30.00 KW	45.00 KW
Multyclone Primary Dust Collector				
No. of Cones	10	15	21	21
Dust Screw Drive Motor	0.75 KW	0.75 KW	1.50 KW	1.50 ftW
Fuel Tank				
Capacity	3000 ltr	5000 ltr	5000 ltr	7500 ltr
Loadout Conveyor				
Conveyor Drive Motor	3.70 KW	5.50 KW	5.50 KW	5.50 KW
Conveyor Belt HR-Grade	500 mm x J7.9 mtr	600 mm x 17.9mtr	600 mm x 20.3mtr	600 mm x 20.3mtr
Gob Hopper Capacity	550 kg	750kg	1500 kg	2000 kg
Hyd.Power Pack	J.S0 KW	2.20 KW	3.70 KW	3.70 KW
Bitumen Tank (O shape Or U Shape)				
Capacity & Shapes	15 Tons	20 Tons	20 Tons	25 Tons
Bitumen Drive Motor	3.70 KW	3.70 KW	3.70 KW	3.70 tiW
Bitumen Pump (Jacketed)	50 mm x 50 mm	50 mm x 50 mm	50 mm x 50 mm	50 mm x 50 mm
Hot Oil Drive Motor	0.75 KW	0.75 KW	0.75 KW	0.75 tiW
Hot Oil Pump	19 mm x 19 mm	4 9 mm x 19 mm	19 mm x 19 mm	19 mm x 19 mm
Mineral Filler Unit				
Drive Motor	0.75 KW	0.75 KW	0.75 KW	1 .5 KW
Rotary Valve	4"	4"	4"	6"
Capacity	1.5 m3	1.5 m3	1.5 m3	1.5 m3
Blower	2.2 KW	3.7 KW	5.5 KW	5.hi KW
Total Connected Load				
Recommended Capacity of Genest	J 00 IVA	125 KVA	182 KVA	250 ftVA
Open Land Requirement	35 mtr x 35 mtr	40 mtr x 40 mtr	45 mtr x 45 mtr	50 mtr x 50 mtr
F.O.KIT(Optional)				
Outflow Heater	4.5 KW	4.5 KW	4.5 KW	4.5 KW
In-Line Heater	14.5 KW	14.5 KW	14.5 KW	14.5 KW

Wet Mix Plant



TECHNICAL SPECIFICATION

Plant Model	FAB WMM-60	FAB WMM-120	FAB WMM-160
Four Bin Feeder			
No. of Bins	4	4	4
Storage Capacity	8m ³	10m ³	10m ³
"Auxillary Drive Motor Auxillary Conveyor Belt"	"2HP x 4 Nos 500mm x 2.45 Mtr"	"2HP x 4 Nos 500mm x 2.45 Mtr"	"2HP x 4 Nos 500mm x 2.45 Mtr"
Gathering Drive Motor	5HP	7.5HP	7.5HP
Gathering Conveyor Belt	600mm x 25.6 mtr	600mm x 29.6 mtr	600mm x 29.6 mtr
Bin Vibrator (1 No)	0.75 KW	0.75 KW	0.75 KW
Feeding Capacity	120TPH	160TPH	200TPH
OVER SIZE REMOVAL SCREEN			
Drive Motor	0.75 KW	0.75 KW	0.75 KW
Wire Mesh	50mm x 50mm	50mm x 50mm	50mm x 50mm
SILNGER CONVEYOR			
Conveyor Drive Motor	3.70 KW	3.70 KW	3.70 KW
Conveyor Belt	600mm x 15 mtr	600mm x 15 mtr	600mm x 15 mtr
Pugmill Unit			
Capacity (Cu M)	1.4	1.6	1.9
No Of Arms	20	26	32
Pugmill Drive (HP)	15	25	50
Water Tank			
Capacity (MT)	15	15	20
water Pump(HP)	2	3	5
Minaral Filler			
Capacity	2	3	5
Blower(HP)	2	2	3
Hydraulic Power Pack	3	3	3

Plant Model	FAB ECO-1500	FAB - 1500	FAB - 2000
Four Bin Feeder			
No. of Bins	4	4	4
Storage Capacity	9m3	9m3	10m3
Auxillary Drive Motor	"2HP x 4 Nos	"2HP x 4 Nos	"2HP x 4 Nos
Auxillary Conveyor Belt	500mm x 2.45 Mtr"	500mm x 2.45 Mtr"	500mm x 2.45 Mtr"
Gathering Drive Motor	5HP	7.5HP	7.5HP
Gathering Conveyor Belt	600mm x 25.6 mtr	600mm x 29.6 mtr	600mm x 29.6 mtr
Bin Vibrator (1 No)	0.75 KW	0.75 KW	0.75 KW
Feeding Capacity	160TPH	160TPH	200TPH
OVER SIZE REMOVAL SCREEN			
Drive Motor	0.75 KW	0.75 KW	0.75 ftW
Wire Mesh	45mm x 45mm	45mm x 45mm	45mm x 45mm
SILNGER CONVEYOR			
Conveyor Drive Motor	3.70 KW	3.70 KW	3.70 KW
Conveyor Belt	600mm x 15 mtr	600mm x 15 mtr	600mm x 15 mtr
THERMO DRUM UNIT			
Diameter	1800mm	1800mm	2100mm
Length	8000mm	8000mm	8000 mm
Connected Power	10hp	10hp	15hp
Drum Slope	5 Degree	5 Degree	5 Degree
Outlet Temprature	170 degree c	170 degree c	170 degree c
Drive Type	4W Friction Drive	4W Friction Drive	4W Friction Drive
DRUM BURNER UNIT			
Type	Modulating High Pressure Fully Automatic	Modulating High Pressure Fully Automatic	Modulating High Pressure Fully Automatic
Fuel	Diesel/Ldo	Diesel/Ldo	Diesel/Ldo
Capacity	15MW	15MW	15MW
HOT ELEVATOR UNIT			
Capacity	140TPH	140TPH	180TPH
TOWER UNIT			
FILLER UNIT			
Drive Motor	5HP	5HP	5HP
Type	Conveying threw Air Pressure Twin Blower	Bucket Elevator	Bucket Elevator
Rotary Valve	6"	6"	6"
Capacity	15TPH	20TPH	25TPH
Screening Unit			
Deck	4	4	4
Screening Capacity	140 TPH	140 TPH	180TPH
Hot Aggrigate Bin Unit			
No Of Bin	4	4	4
Hot Bin Bin Capacity	2500	2500	2750
Weighing Unit Capacity			
Aggrigate Weighing Hopper	2000	2000	2500
Filler Weighing Hopper	300	300	300
Bitumen Weighing Hopper	300	300	350
Mixer Unit			
Mixer Capacity	1500	1500	2000
Bitumen Pump	450	450	450
Pollution Control Unit			
Primary Type	Dual Cyclone	Dual Cyclone	Dual Cyclone
Secondary Type	Baghouse Unit	Baghouse Unit	Baghouse Unit
Type	Reverse Air Flow Type	Reverse Air Flow Type	Reverse Air Flow Type
Filter area	350m2	350m2	450m2
Number Of Bags	480	480	540
Material Type	Nomex Aramid	Nomex Aramid	Nomex Aramid
Exhaust Unit			
Exhaust Drive Motor	100HP	100HP	120HP
Control Panel			
Panel Type	Fully Computerised,Manual Over Ride Also	Fully Computerised,Manual Over Ride Also	Fully Computerised,Manual Over Ride Also
Accessories			
Bitumen Tank			
Capacity	30Ton	30Ton	30Ton
Heating type	Direct/Indirect	Direct/Indirect	Direct/Indirect
Thermic Oil Heater			
Type	Horizontal Tubular Boiler	Horizontal Tubular Boiler	Horizontal Tubular Boiler
Capacity	300000kcal	300000kcal	500000kcal
Fuel	Diesel	Diesel	Diesel
Thermic Burner			
Type	High Pressure Mechanical Automization	High Pressure Mechanical Automization	High Pressure Mechanical Automization
Capacity	10-50 ltr/hr	10-50 ltr/hr	10-50 ltr/hr
Control	Auto Ignition, High Low Control	Auto Ignition, High Low Control	Auto Ignition, High Low Control
Circulating Pump			
Type	Centrifugal Pump	Centrifugal Pump	Centrifugal Pump
Capacity	20m3/hr	20m3/hr	20m3/hr
Head	20 m	20 m	20 m
Connected Power	7.5kw	7.5kw	7.5kw
Oil Tank			
Capacity	18000ltr	18000ltr	18000ltr
Filler Silo			
Capacity	3m3	3m3	3m3

3% moisture content in cold aggregates, 38°C atmospheric temperature aggregated density of 1.6tons/m3 mean sea level, Ambient temperature of 35°C Hot mix temperature of 150°C.

ASPHALT BATCH MIX PLANT GALLERY



Madhya Pradesh Plant



Pune Nasik Highway Plant



Pune Plant



Pusad Plant



Andhra Plant



Chhattisgarh Plant



Haryana Plant



Jawahar Plant



Thane Plant



Telangana Plant



Hyderabad Plant



Odisha Plant



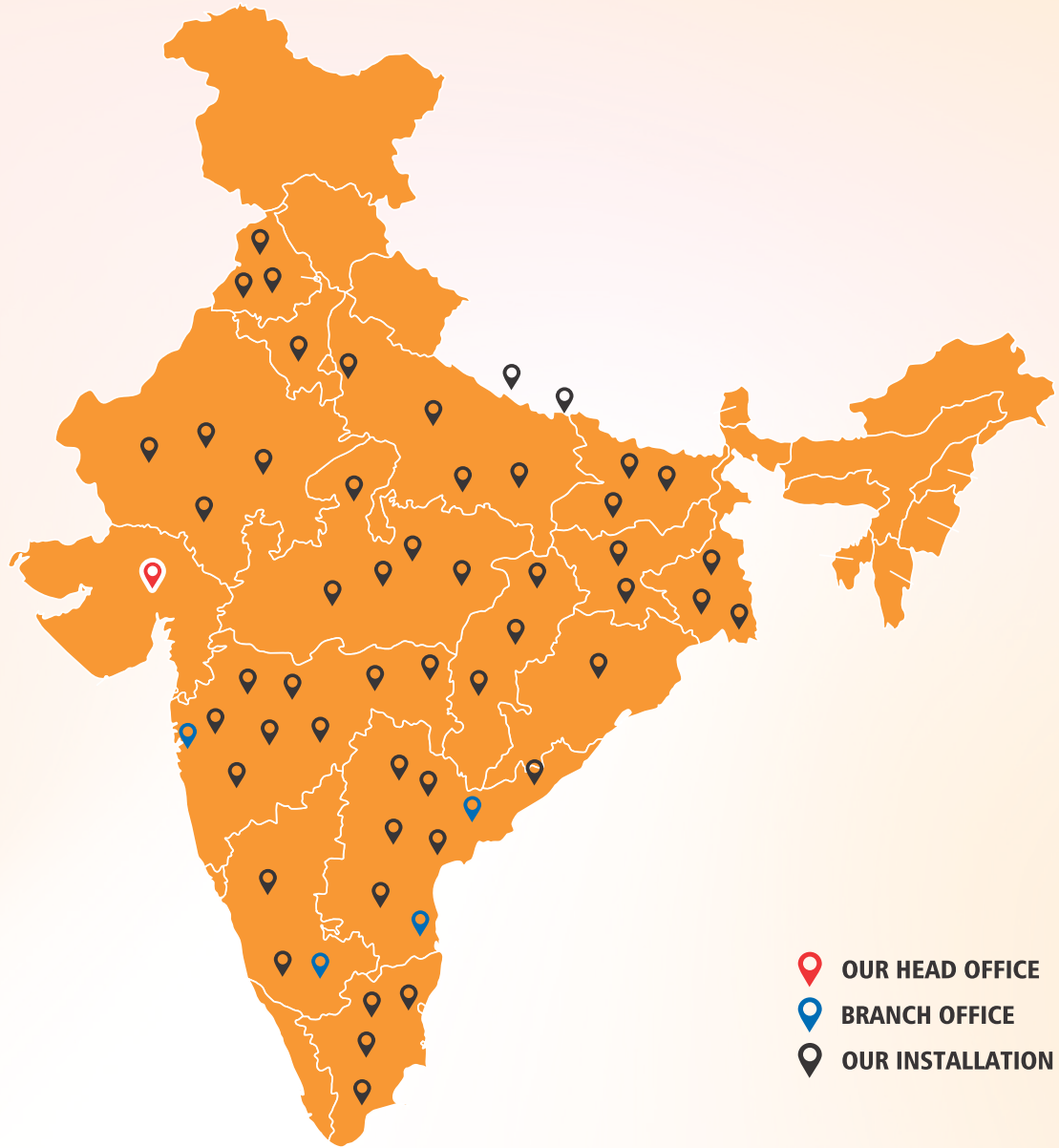
Sagar Plant



Udupi Plant



Vijaywada Plant



GLOBAL PRESENCE



SRI LANKA



NEPAL



MYANMAR



BANGLADESH



SOUTH AFRICA



KENYA



IRAN

FABHIND PVT. LTD.

Unit-1 : Plot No.16, Khodiyar Estate, I/S.shakriba Estate, Phase - IV, Vatva G.I.D.C, Ahmedabad-382445. Gujarat, INDIA.

Unit-2 : Survey No 98 & 92/2, Mahesana Ahmedabad Road, Near Heavy Metal Tubes, At: Mandali, Mehsana, Gujarat- 384130

Phone : +91-79-40301472 | Mobile : +91 - 8980014640 / 8980014771

E-mail : info@fabhind.com, sales@fabhind.com | **Web** : www.fabhind.in / www.fabhind.com